



SCIROCCO



A1476-200

IMPORTANT

Before you begin to assemble your model kit, study the instructions carefully. This will help you to familiarize yourself with the part locations as you proceed. Prior to cementing parts together, be sure to "TEST FIT" them in order to assure proper alignment and also to check for excess "FLASH" that may occur along parting lines. Use a sharp hobby knife or file to remove flash if necessary. If you wish to paint your model, various subassemblies and components should be painted before any parts are attached. During assembly, you may note that the recommended color is stated after the part name. This model kit is molded from the finest high-impact styrene plastic. Use only paints and cements which are specifically formulated for styrene. Read all labels and warnings carefully. Because the cement will only adhere to bare plastic, it is necessary to remove any paint or "plating" from the area to which the cement is to be applied.

SYMBOLS

② • Assembly sequence

➡ • Repeat on other side

• Apply decal

① • Part number

(2X) • Repeat several times

• Do not cement

☐ • Paint this color

③ • Completed Assembly

PAINT COLORS

A	Black	G	Chrome (Bright Silver)	M	Yellow
B	Flat Black	H	Aluminum	N	Lt. Blue
C	Semi-Gloss Black	I	Steel	BC	Interior Color
D	White	J	Gold	IC	Body Color
E	Flat White	K	Transparent Amber		
F	Silver	L	Transparent Red		

It is recommended that you search the internet for additional color references and details.

EXTERIOR COLORS

Colors May Include: Diamond Silver Poly, Viper Green Poly, Ancona Blue Poly, Scarlet Red, Malaga Red, Fiesta Orange and Sunflower Yellow.

INTERIOR COLORS

Colors May Include: Black, Grey, and Brown with multi-colored plaids such as Medium Blue, Red, Green or Grey for the seat centers to match exterior.



ROUND 2, LLC
4073 MEGHAN BEELER COURT
SOUTH BEND, IN 46628

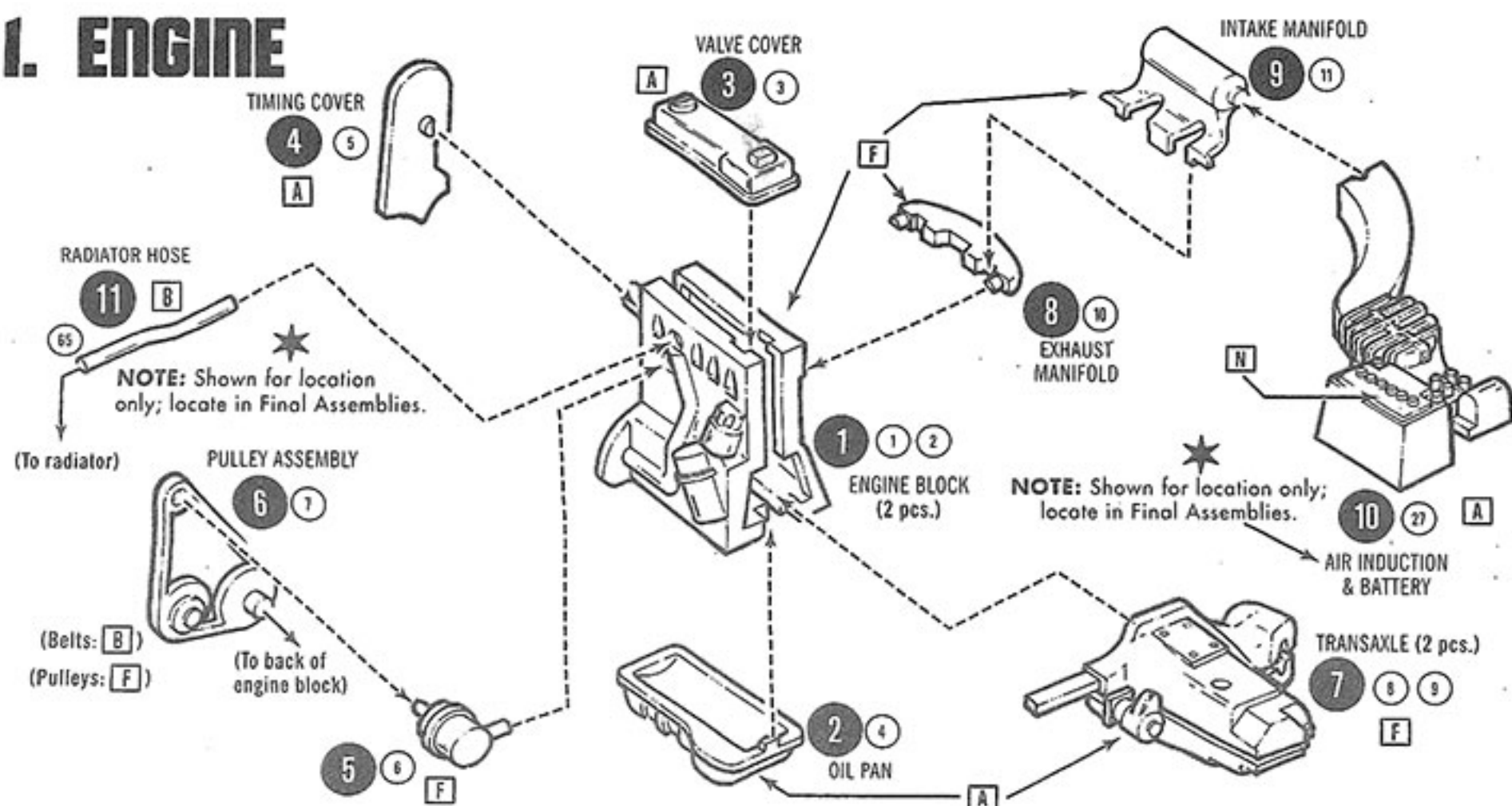
For a complete list of our newest model kits and more, visit:

round2corp.com

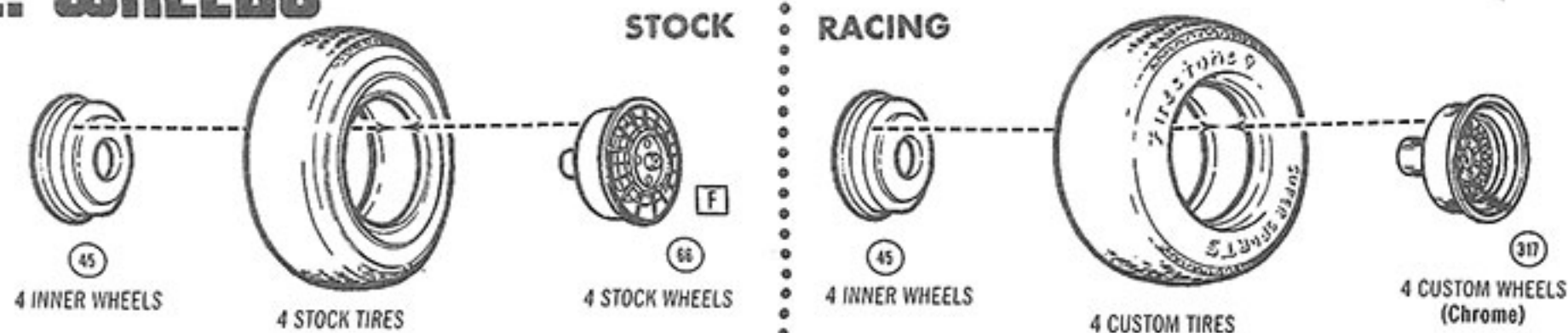


Volkswagen® Trademarks, design patents and copyrights are used with the approval of the owner Volkswagen AG. Firestone and the F-Shield Logo are registered trademarks of Bridgestone Brands, LLC and are used with permission. AMT and design and ROUND 2 and design are trademarks of Round 2, LLC. ©2025 Round 2, LLC, South Bend, IN 46628 USA. Product and packaging designed in the USA. Made in China. All rights reserved.

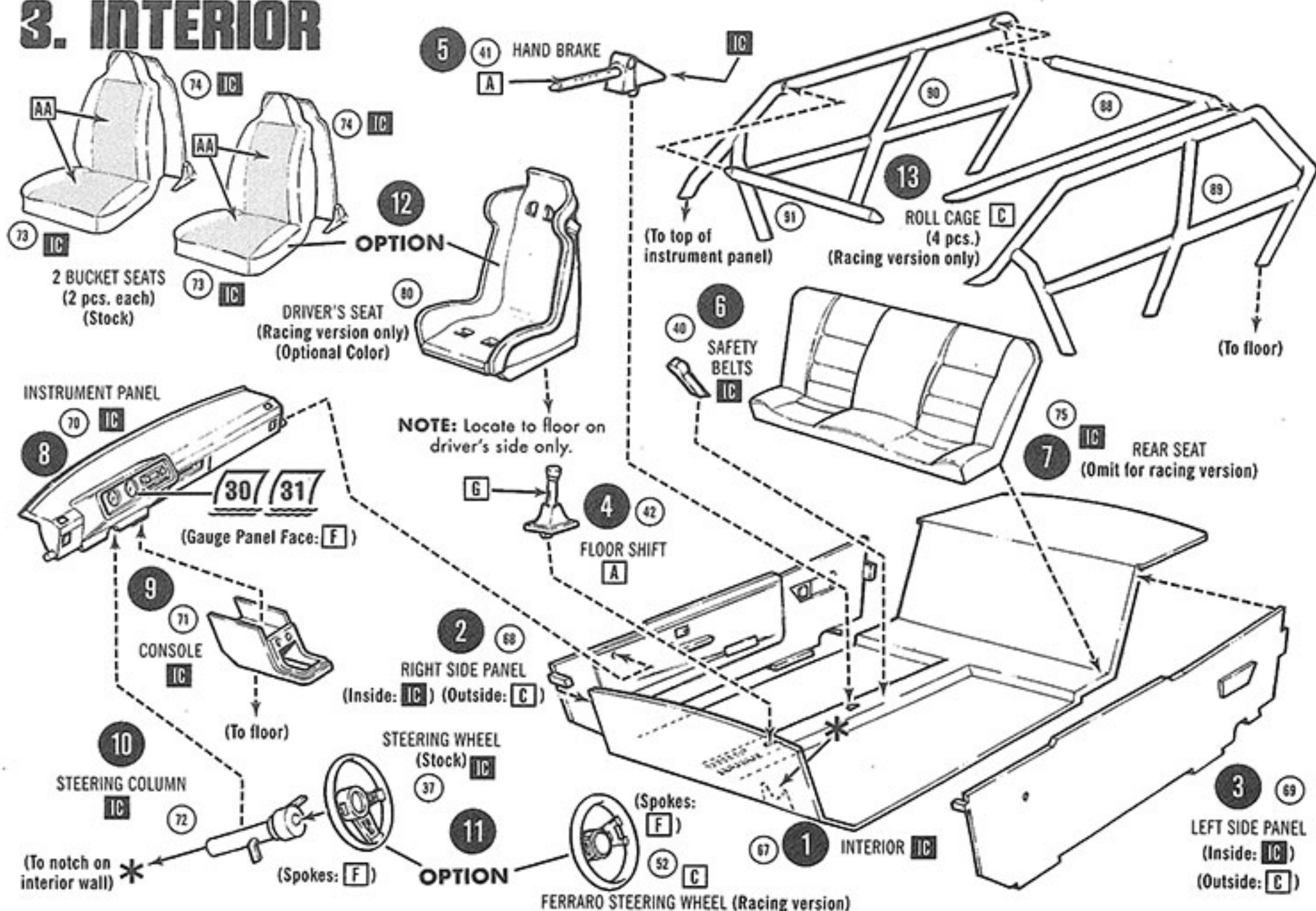
1. ENGINE



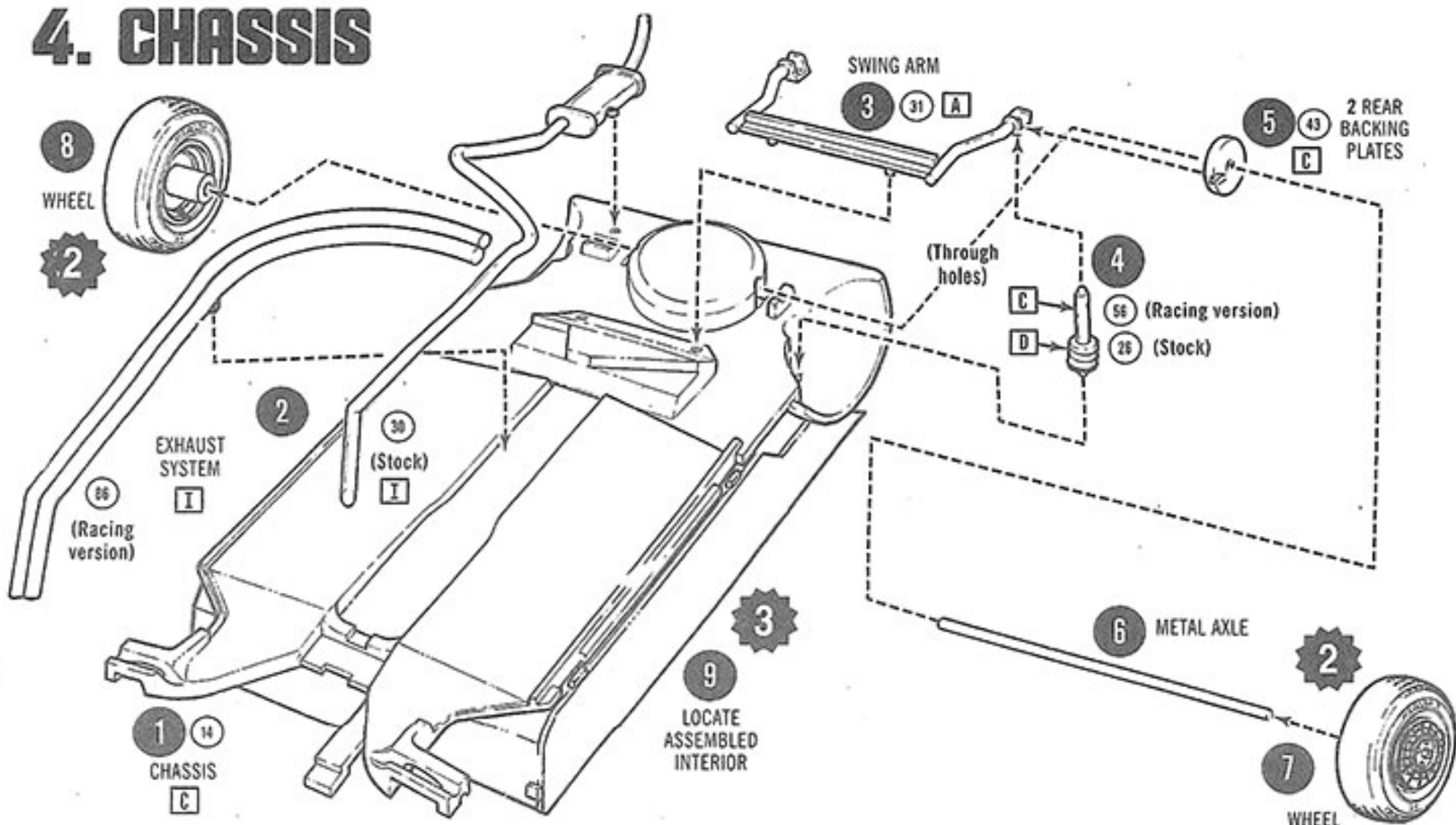
2. WHEELS



3. INTERIOR

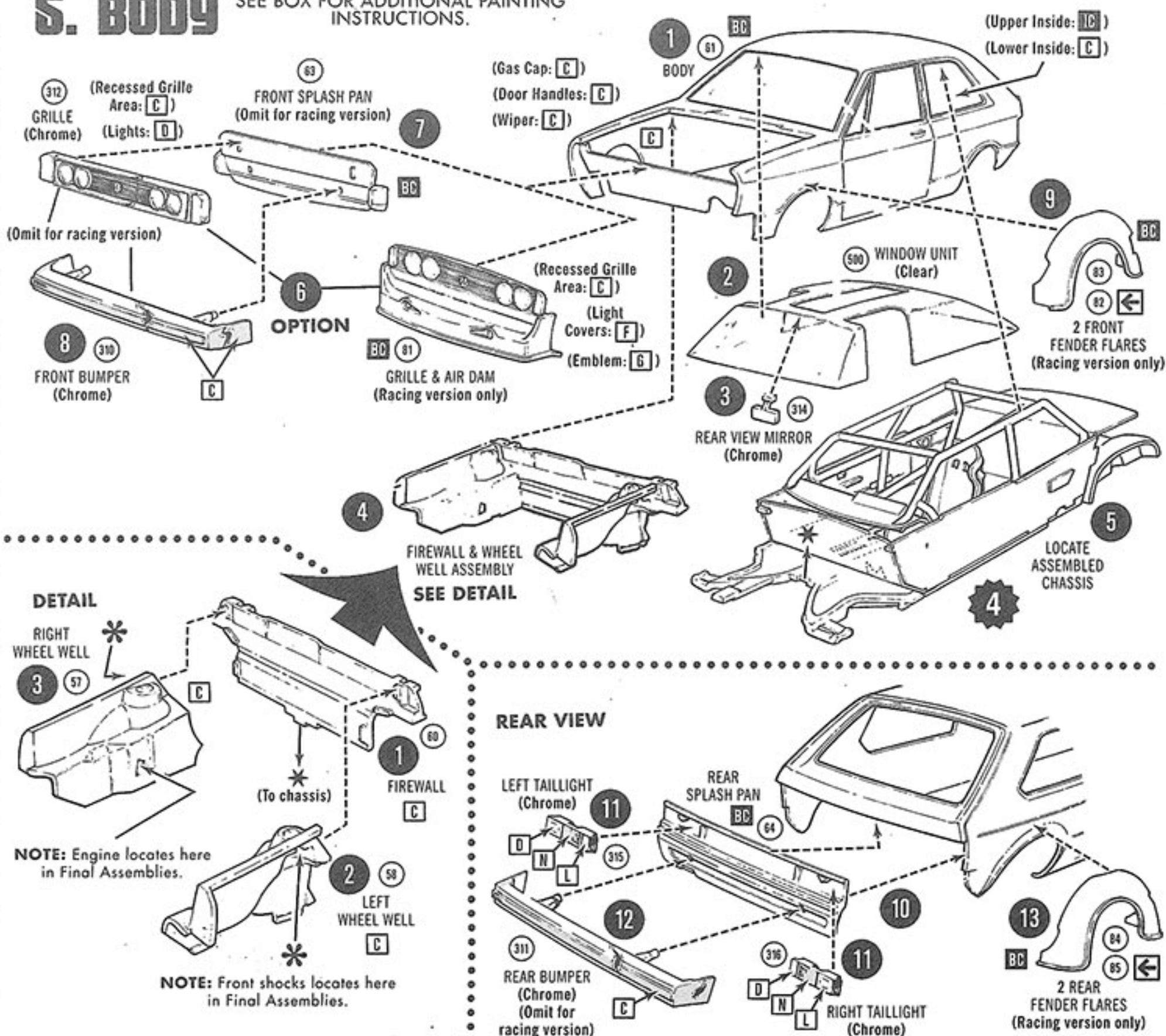


4. CHASSIS



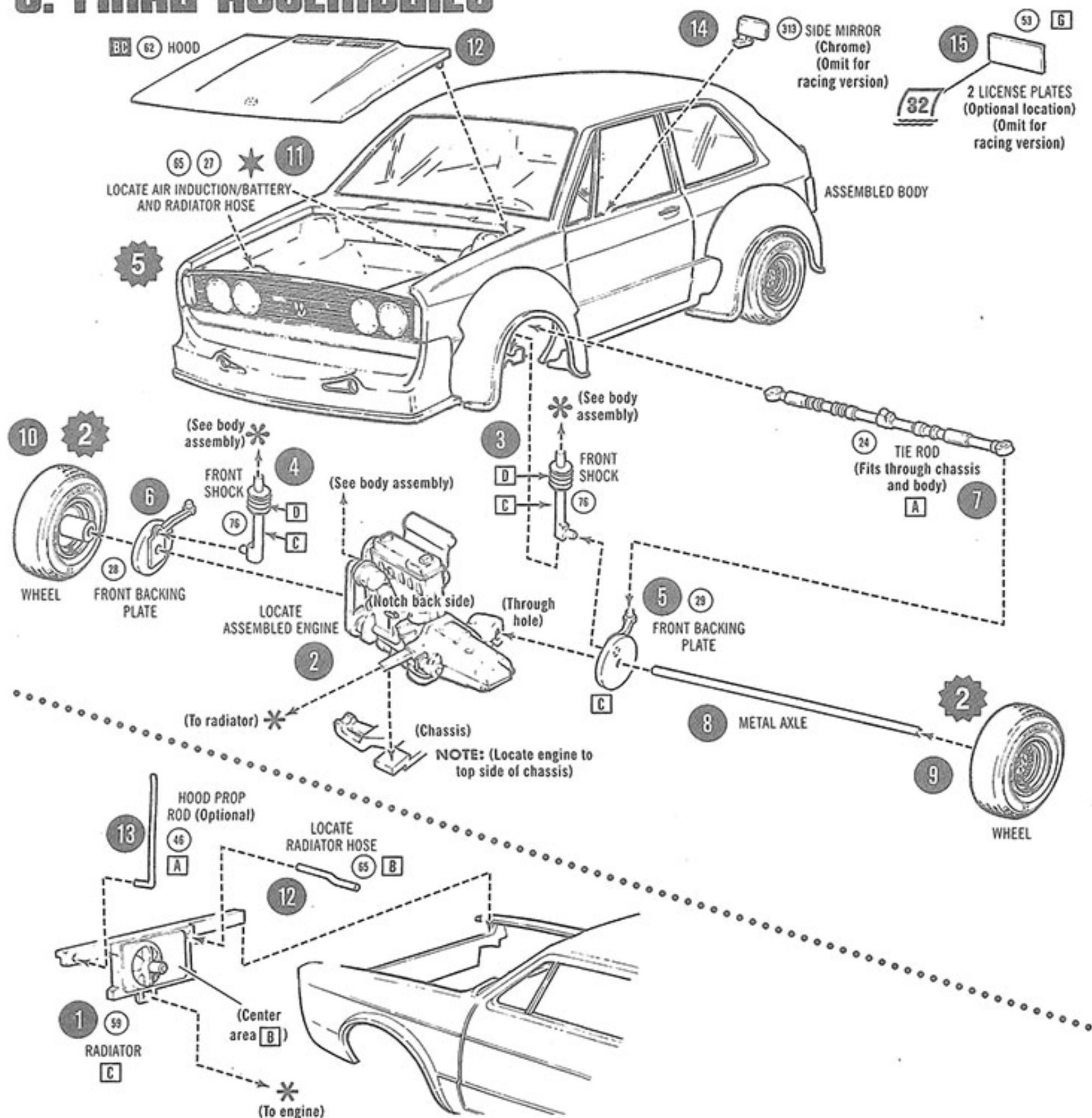
5. BODY

SEE BOX FOR ADDITIONAL PAINTING INSTRUCTIONS.



6. FINAL ASSEMBLIES

SEE BOX FOR ADDITIONAL PAINTING INSTRUCTIONS.



7. DECAL PLACEMENT

